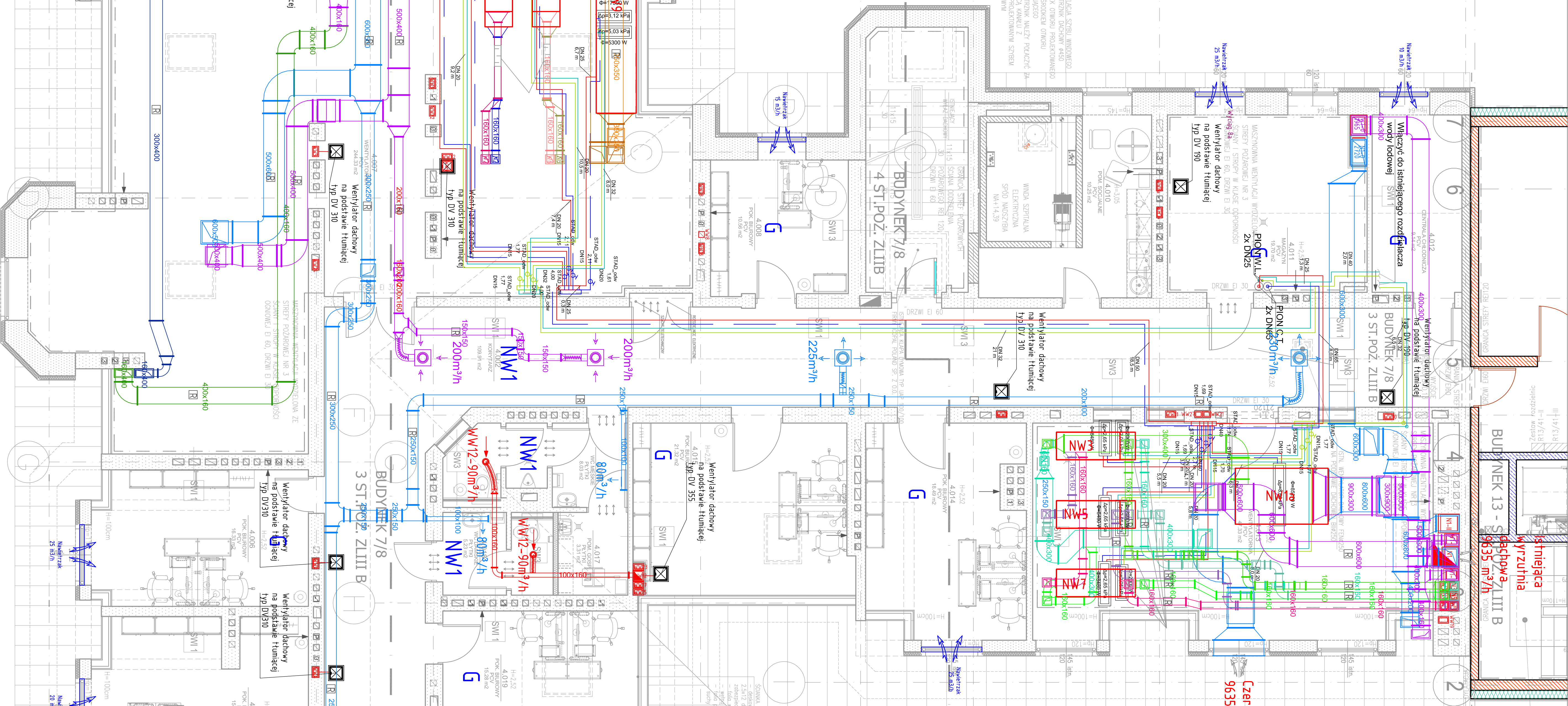


[illegible]

Architectural floor plan of a building, showing various rooms and technical specifications. The plan includes a staircase (Schleuse) with dimensions 9635 x 3700, a ventilation unit (Ventilator) with dimensions 400x400, and a room labeled 'BUD. PNEK 13 - 5850x3700'. The plan also shows a 'Wentylator dachowy na postawie tunelowej' (roof ventilation unit on a tunnel base) and a 'Wentylator dachowy na postawie tunelowej' (roof ventilation unit on a tunnel base). The plan is dated 2023 and includes a scale of 1:50. The drawing is signed 'Zer' and '9635'.



-